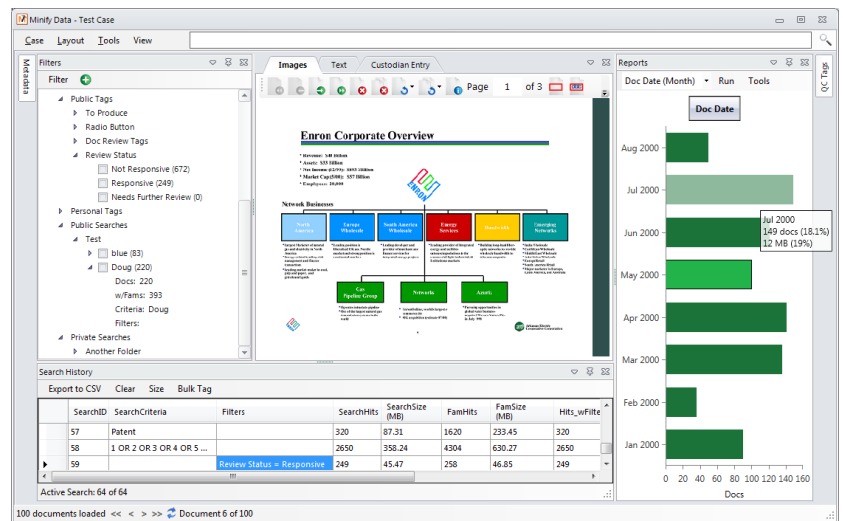


Easy-Discovery Processing

Minify Data is a proven electronic discovery processing suite that helps companies quickly identify and analyze data. Developed by a team of eDiscovery experts, Minify Data is a complete eDiscovery processing platform that reduces the time to prepare cases for review. Minify Data's automated workflow adapts to the needs of any case, providing a defensible, repeatable, and documented process. Minify Data is both scalable and distributed to allow users to easily manage the massive amount of data encountered in today's complex litigation.



Collection and Analysis

- **Simple Data Intake** Load and index data quickly with an easy-to-use interface.
- **Extensive File Type Support** Process source data in almost any file format, including recognition of text in image-based files.
- **Protected File Handling** Identify problem documents easily, allowing the user to add manually extracted documents while preserving the original file structure.
- **Data Culling** Separate essential case data by removing duplicate and system files.
- **Keyword Searches** Locate relevant data using Boolean, proximity, synonym, phonetic, wildcard, and fuzzy searches.
- **Multiple Keyword Searches** Run searches on hundreds of keywords in seconds, receiving detailed search reports.
- **Faceted Searching** Narrow search results using customizable filters, receiving dynamically updated document counts as you refine your search.
- **Customizable Reports** Create reports organized by any combination of document properties, such as file type, creation date, document author, and over one hundred others.

Production and Export

- **Flexible Image Conversion** Achieve high speed conversion of any printable file to images, formatted as needed for any production requirement.
- **Extensible File Types** Add automated image conversion for new file types as they are encountered.
- **Intuitive Quality Control** Assure quality of created images with less labor using interactive conversion flags generated during processing.
- **Unmodified Data Export** Export only needed documents, reducing the size of collected data, while preserving the original folder structure for forensic integrity.
- **Refined Data Export** Reliably produce documents for almost any review platform using templates to assure consistent output.
- **Specified Data Output** Automatically create load files to meet any technical specification without the need for expensive technical labor.
- **Recorded Production History** Facilitate project management using automatically generated records of all exports.

Schedule a demo today:

Ezra Silverman
(302)-888-2060
esilverman@digitallegal.net